



Order Online

Place your order securely online at
www.Myhresports.com

Myhre Sports Photos

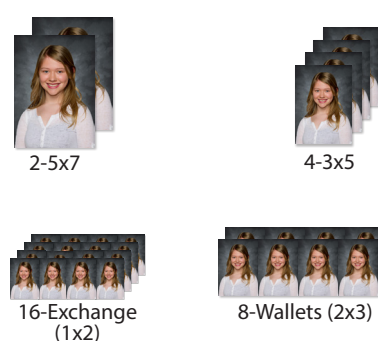
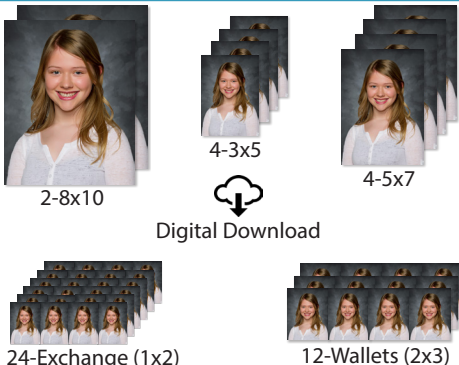
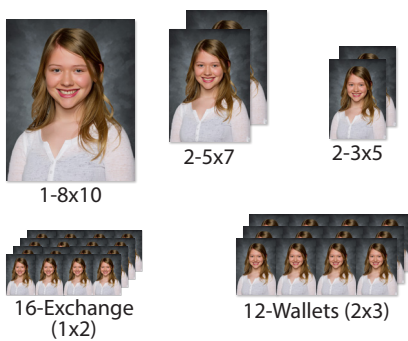
125 East Main Street • Luverne, MN 56156
 (507)283-4325 (voice or text) • orders@myhresports.com
Preschool Picture Days: Tues 9/26 & Wed 9/27
Pre-Order Deadline: 5:00 PM Thursday 9/28

Picture Day Packages

A - Deluxe \$36

B - Premium \$45

C - Value \$29



D - Basic \$22

E - Ultimate \$49

F - Entry \$17

4 - 3x5
 8 - Wallets (2x3)
 16 - Exchange Wallets (1x2)

3 - 8x10
 4 - 5x7
 4 - 3x5
 16 - Wallets (2x3)
 32 - Exchange Wallets (1x2)
 High Quality Digital Download

2 - 3x5
 4 - Wallets (2x3)
 8 - Exchange Wallets (1x2)

Add-on Items

	Description	Price
G	Button with border & name	\$7
H	Button - image only	\$7
I	4 Wallet Magnets - image only	\$10
J	8 Wallet Magnets	\$15
K	4x6 Metal Desk Print	\$22
L	2-sided Metal Key Chain	\$15
N	3 Key Fobs	\$10
O	Fun Pak	\$15
P	Dog Tag with Chain	\$15
Q	Dry Erase Locker Magnet 4x10	\$15
R	High Quality Digital Download	\$18
S	1-8x10	\$12
T	2-5x7	\$12
U	4-3x5	\$12
V	8 wallets (2x3)	\$12
W	16 Exchange Wallets (1x2)	\$12
X	1-10x13	\$19
Y	8x6 Class Composite	\$10
Z	Retouching	\$10

Build Your Own Package (BYOP)

BYOP-4 \$39	BYOP-6 \$44	BYOP-8 \$57
order any 4 items	order any 6 items	order any 8 items
Order items in any combination. Each • equals one item		
Get Exactly What You Need!	<ul style="list-style-type: none"> • 1-8x10 • 4-3x5 • 16-Exchange 	<ul style="list-style-type: none"> • 2-5x7 • 8-Wallets

Credit Card Information - cut off and enclose



_____ / _____
 card number exp. date security code

_____ address, city, state, zip

Please remove envelope at perforation and insert checks or cash for payment. Moisten the glue strip and seal.

Please print clearly and fill out all information completely. Add-on Items may only be ordered with the purchase of a package.

Student Information	Student Name:	Teacher:	Grade:	Parent Phone:
	Parent Name:			
	Email (optional):			

Step 1 - Choose Background				
✓	Background	#	Price	Total
	Background #F1 <i>gray traditional</i>	#F1	Free	\$0
	Other Background	#	\$2	\$
Backgrounds F2-F8 require a purchase If no background is chosen, you will receive F1, gray traditional.				

Step 2a - Choose Packages				
Pkg.	Print Packages	Qty.	Price	Total
A	Deluxe		\$36	\$
B	Premium		\$45	\$
C	Value		\$29	\$
D	Basic		\$22	\$
E	Ultimate		\$49	\$
F	Entry		\$17	\$

Retake Policy
 No charge for retakes for expression.
 \$5 charge for retakes for different clothing or hair style.

Step 2b - Build Your Own Package				
Pkg.	Print Packages	Qty.	Price	Total
First - Choose the BYOP for the number of items you need.				
BYOP-4	Build your own - 4 Items		\$39	\$
BYOP-6	Build your own - 6 Items		\$44	\$
BYOP-8	Build your own - 8 Items		\$57	\$
Second - Pick the items & quantity				
Pkg S	1-8x10			
Pkg T	2-5x7			
Pkg U	4-3x5			
Pkg V	8 Wallets			
Pkg W	16 Exchange Wallets			

Step 3 - choose Add-On Items				
Pkg.	Add-On Item	Qty.	Price	Total
				\$
				\$
				\$
				\$
				\$
Late order charge after 5pm on 9/28 add \$5				\$
Total Enclosed			\$	



Order Online

Place your order securely online at www.MyhreSports.com

Myhre Sports Photos

125 East Main Street • Luverne, MN 56156
(507)283-4325 (voice or text) • orders@myhresports.com

Add On Options

Wallet Magnets



set of 8 with variety border or
set of 4 magnets - image only

Metal Key Chain



2-sided aluminum key
chain with semi-gloss
finish 1.6 x 2.25 inches.

Metal Desk Print



Brilliant 4x6 sized self-standing print.

Dog Tag



Dry Erase Locker Magnet



4x10 Dry Erase Locker
Magnet with your name and
combo marker/eraser pen.

Digital Download



High quality digital download
of your school portrait with
reproduction release.

Key Fobs



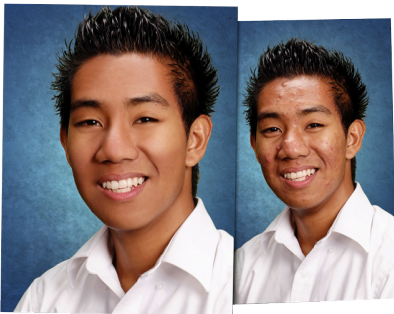
Set of three 1x2 inch laminated
key fobs. Includes year.

Fun Pak



Colorful collection of press printed, clear
plastic-laminated, and die cut items.

Retouching



Retouching removes minor facial blemishes
on your portraits but does not make
corrections to hair, teeth or glasses.

Buttons



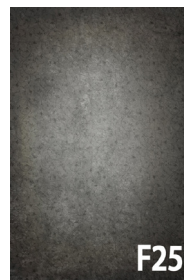
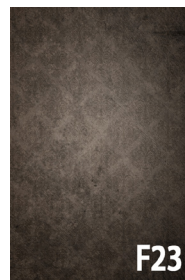
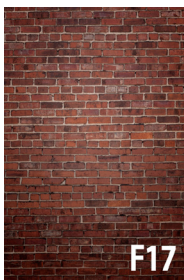
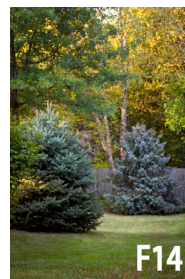
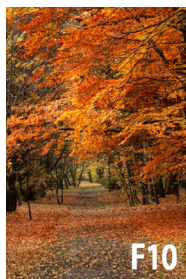
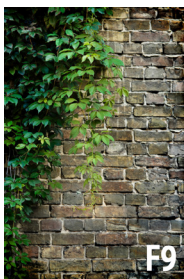
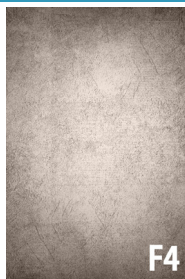
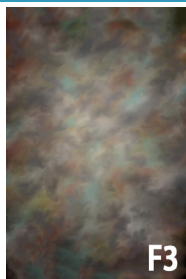
3" Button with border and name or
plain button with image only.

Class Composite



Class composites are available for
elementary and preschool classes and will
be delivered separately after retake day.

Background Options



If no background is chosen, you will receive the gray background (F1). Your background selection will apply to your personal order ONLY. For uniformity, all school composites and yearbook photos will be created with the gray background (F1).