

Please print clearly and fill out all information completely. Add-on Items may only be ordered with the purchase of a package.

Student Information

| | | |
|---------------|--------------|------------------|
| Student Name: | Grade: | Parent Phone: |
| Teacher: | Parent Name: | Email (optional) |

| Step 1 - Choose Background | | | | |
|----------------------------|---|-----|-------|-------|
| ✓ | Background | # | Price | Total |
| | Background #F1 <i>gray traditional</i> | #F1 | Free | \$0 |
| | Other Background | # | \$2 | \$ |

*Backgrounds F2-F8 require a purchase
If no background is chosen, you will receive F1, gray traditional.*

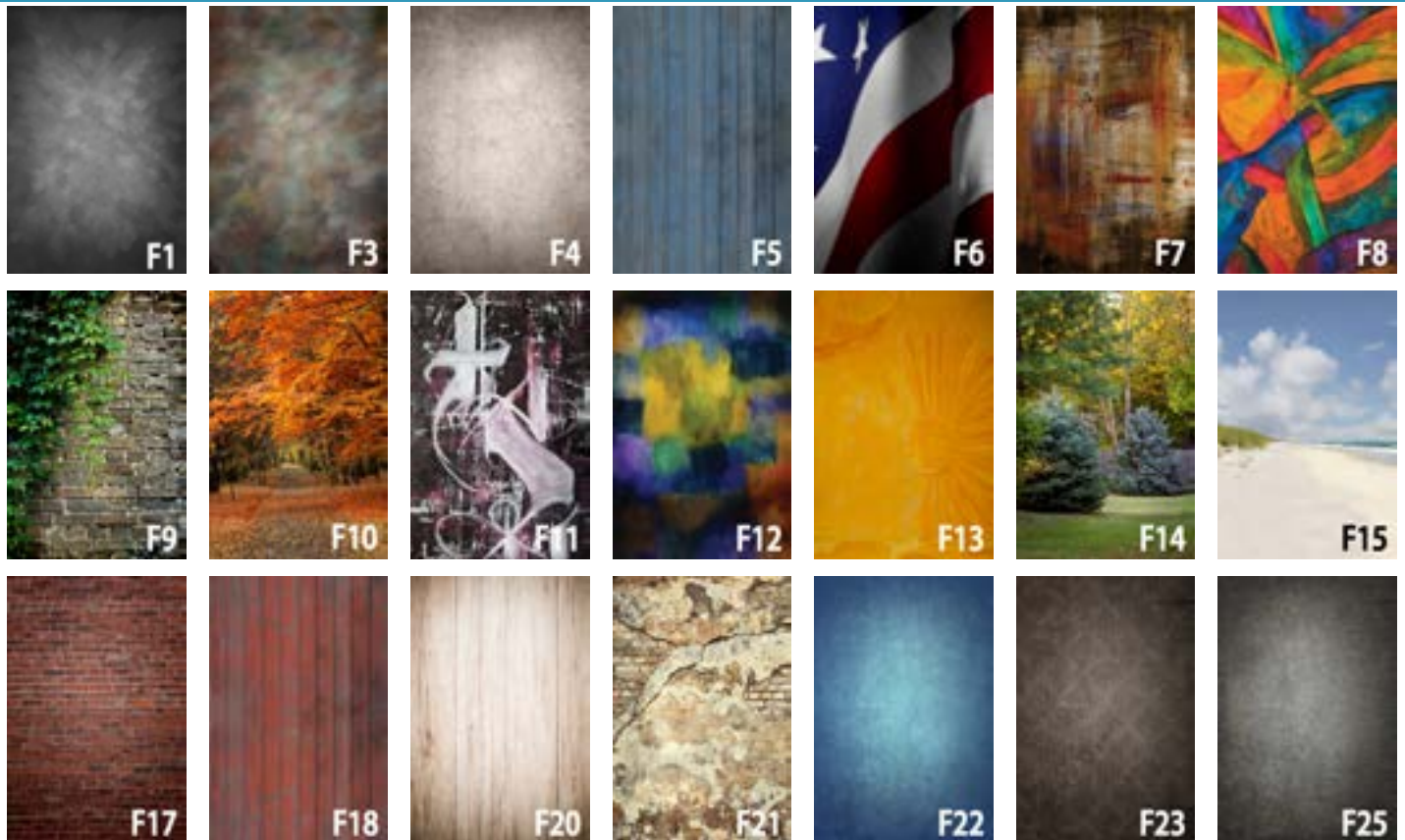
| Step 2a - Choose Packages | | | | |
|---------------------------|----------------|------|-------|-------|
| Pkg. | Print Packages | Qty. | Price | Total |
| A | Deluxe | | \$36 | \$ |
| B | Premium | | \$45 | \$ |
| C | Value | | \$29 | \$ |
| D | Basic | | \$22 | \$ |
| E | Ultimate | | \$49 | \$ |
| F | Entry | | \$17 | \$ |

Retake Policy
No charge for retakes for expression.
\$5 charge for retakes for different clothing or hair style.

| Step 2b - Build Your Own Package | | | | |
|--|--------------------------|------|-------|-------|
| Pkg. | Print Packages | Qty. | Price | Total |
| <i>First - Choose the BYOP for the number of items you need.</i> | | | | |
| BYOP-4 | Build your own - 4 Items | | \$39 | \$ |
| BYOP-6 | Build your own - 6 Items | | \$44 | \$ |
| BYOP-8 | Build your own - 8 Items | | \$57 | \$ |
| <i>Second - Pick the items & quantity</i> | | | | |
| Pkg S | 1-8x10 | | | |
| Pkg T | 2-5x7 | | | |
| Pkg U | 4-3x5 | | | |
| Pkg V | 8 Wallets | | | |
| Pkg W | 16 Exchange Wallets | | | |

| Step 3 - choose Add-On Items | | | | |
|--|-------------|------|-------|-------|
| Pkg. | Add-On Item | Qty. | Price | Total |
| | | | | \$ |
| | | | | \$ |
| | | | | \$ |
| | | | | \$ |
| Late order charge after 5pm on 9/22 add \$5 | | | | \$ |
| Total Enclosed | | | \$ | |

Background Options



If no background is chosen, you will receive the gray background (F1). Your background selection will apply to your personal order ONLY. For uniformity, all school composites and yearbook photos will be created with the gray background (F1).